

Artificial Quartz Slab Floor, Wall, Table/Kitchen, Counter & Washing Top

Artificial Marble Slab Floor, Wall, Table/Kitchen, Counter & Washing Top

Artificial Granite Slab Floor, Wall, Table/Kitchen, Counter & Washing Top

Artificial Terrazzo Slab Flooring System [*Call it Thin-Set Epoxy Terrazzo*]

**Applied on Resident, Shopping Complex,
Commercials, Hospitals, Hotel, Industrials & Housings**

**Decorative Floor, Wall, Table/Kitchen, Counter & Washing Top for Chemical
Resistance, High Performance, Easy Clean, Highly Durability & Flexibility**

Select of Thickness: 12, 14 & 16mm
20mm
30mm

**for Medium-Duty,
for Heavy-Duty
for Extremely Heavy-Duty**



Applied on Lift Wall & Floor



Commercial Shopping Centre Floor



Hotel Floor, Column & Wall



Office Floor & Wall



Bath Tub



Washing Top



Washing Top



Shopping Centre Floor



Design of Decorative Floor



LaMaCo System Sdn Bhd

407, Jalan Perusahaan 6, Taman Bandar Baru Mergong,
05150 Alor Setar, Kedah. Malaysia.

Tel : +60-4-771 1111

Fax : +60-4-772 4444

Http : www.lamaco.com

Email : info@lamaco.com

Important 1: While the information and data sheet contained in this promotional literature are presented in good faith and believed to be reliable, they do not constitute a part of our terms and conditions of sales unless specifically incorporated in our Order acknowledgement. Nothing herein shall be deemed to constitute a warranty, express or implied, that said information or data sheet are correct or that the products described are merchantable or fit for a particular purpose, or that said information, data sheet or products can be used without infringing patent of third parties.

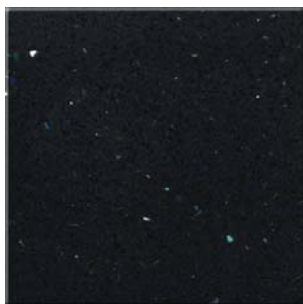
Important 2: **LaMaCo Malaysia** products are not guaranteed against defective materials and manufacture & are sold subject to its standard Terms & Conditions of sale, copies of which may be obtained on request. Whilst **LaMaCo Malaysia** endeavors to ensure that any advice, recommendation, specification or information is accurate and correct, it cannot- because it has no direct or continuous control over where or how its products are applied - accept any liability either directly or indirectly arising from the use of its products, whether or not in accordance any advice, specification, recommendation or information given by it.

Health & Safety Some of the components of this product may be hazardous during mixing and application. Please consult the relevant Health & Safety Data Sheets, available from **LaMaCo Malaysia** on request and sent with each delivery.

Artificial Quartz Slab
Floor, Wall, Table/Kitchen, Counter & Washing Top

Panel Slab Size: Select thickness from 12, 14, 20 & 30mm
[3000mm x 1400mm] & [2700mm x 1500mm]

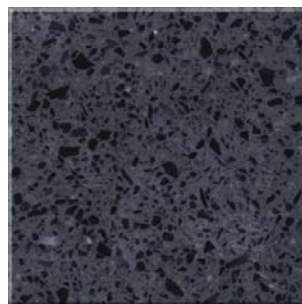
Slab Floor Size: Select thickness from 12, 14, 20 & 30mm
[600mm x 600mm], [600mm x 300mm] & [300mm x 300mm]



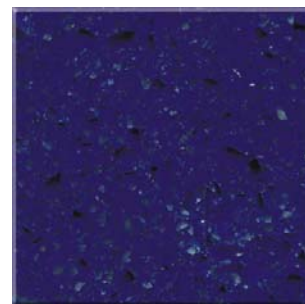
BYQ224



BYQ223



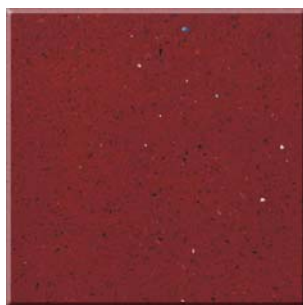
BYQ222



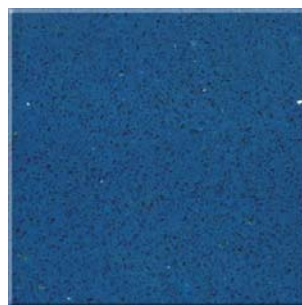
BYQ221



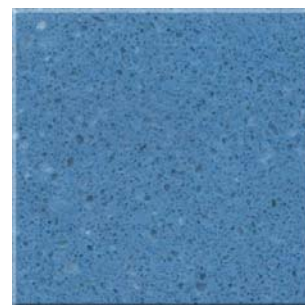
BYQ220



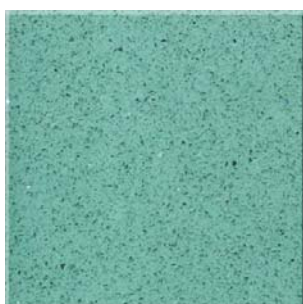
BYQ218



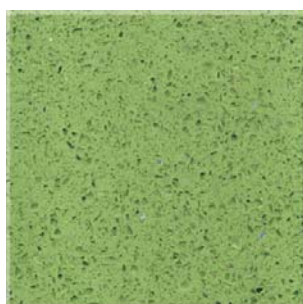
BYQ217



BYQ216



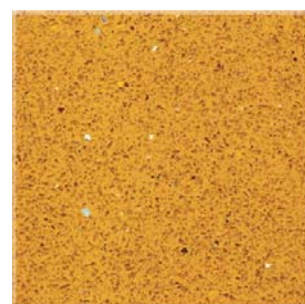
BYQ215



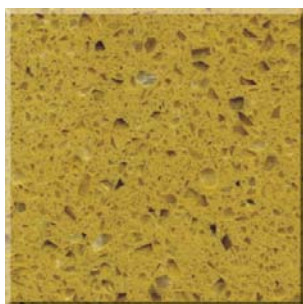
BYQ214



BYQ213



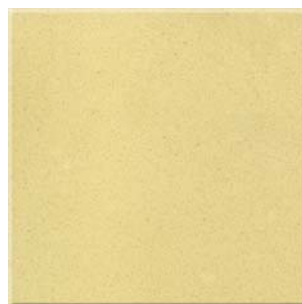
BYQ212



BYQ211



BYQ210



BYQ209



BYQ208

Artificial Quartz Slab
Floor, Wall, Table/Kitchen, Counter & Washing Top

Panel Slab Size: Select thickness from 12, 14, 20 & 30mm
[3000mm x 1400mm] & [2700mm x 1500mm]

Slab Floor Size: Select thickness from 12, 14, 20 & 30mm
[600mm x 600mm], [600mm x 300mm] & [300mm x 300mm]



BYQ207



BYQ206



BYQ205



BYQ204



BYQ203



BYQ202



BYQ201



YQ008D



BB1010



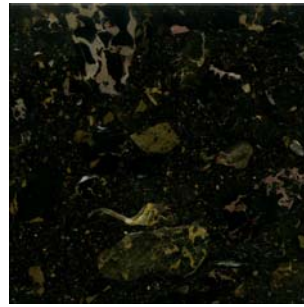
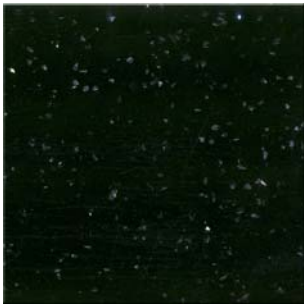
YQ006



Artificial Marble Slab
Floor, Wall, Table/Kitchen, Counter & Washing Top

Panel Slab Size: Select thickness from 12, 14, 20 & 30mm
[3000mm x 1400mm] & [2700mm x 1500mm]

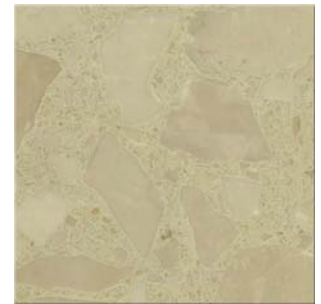
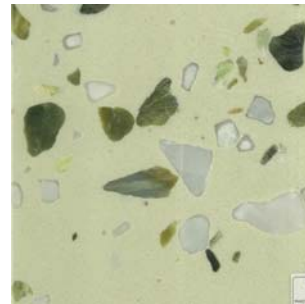
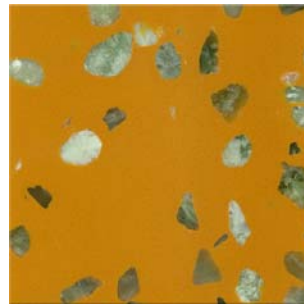
Slab Floor Size: Select thickness from 12, 14, 20 & 30mm
[600mm x 600mm], [600mm x 300mm] & [300mm x 300mm]



BD999

BD018

GS212

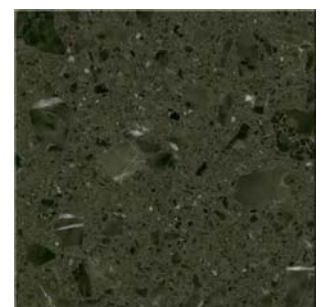
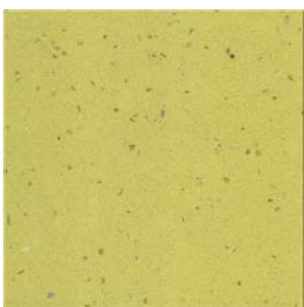


BS112

BY997

BY991

BY880

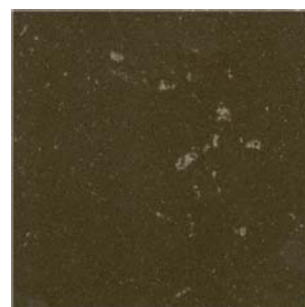
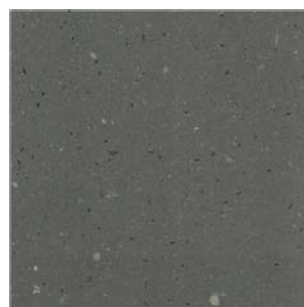


GS205

BH802

BH813

BY890



BH808

GS206

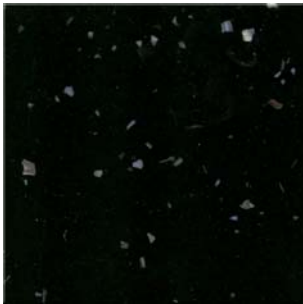
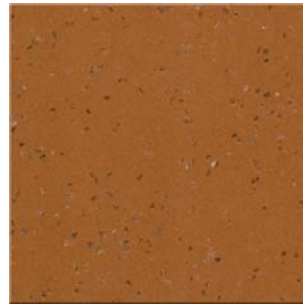
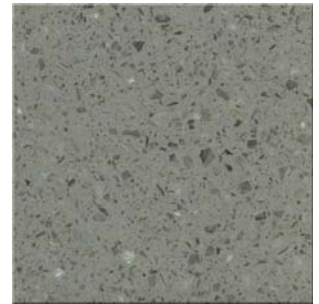
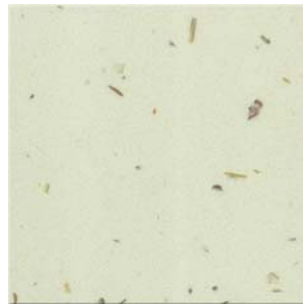
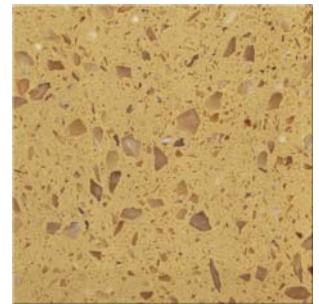
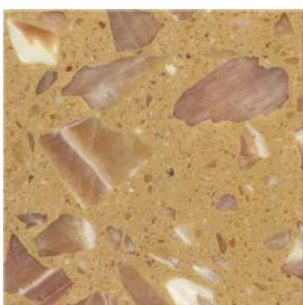
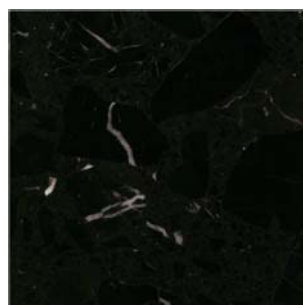
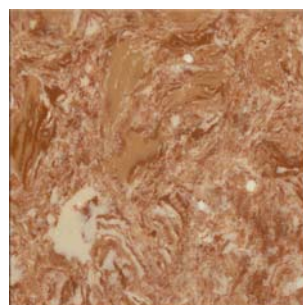
BH901

BS109

Artificial Marble Slab
Floor, Wall, Table/Kitchen, Counter & Washing Top

Panel Slab Size: Select thickness from 12, 14, 20 & 30mm
[3000mm x 1400mm] & [2700mm x 1500mm]

Slab Floor Size: Select thickness from 12, 14, 20 & 30mm
[600mm x 600mm], [600mm x 300mm] & [300mm x 300mm]

**BS110****BS111****GS207****BY930****BH815****BS103****BY870****BY820C****BY820****BY910****BD016****BD007**

Description & Uses

Artificial Slab is **Resin** is a colored solvent-free resin binder formulated to be filled with fine mineral and coarse decorative aggregates (modified color cement, natural chipping or marble dust and marble chips). This system offers custom and versatile design options, while providing a seamless finish with excellent wear resistance.

This system is designed for interior use on concrete, plywood or steel substrates. Artificial Slab is ideal for new or renovation work because it is thin and quickly installed. Conforms to **NTMA for Artificial Slab**.

Artificial Slab is available in 4 versions:

- Improved version for easier workability and faster installation.
- Original formulation with flow able properties.
- Designed for vertical applications or coved bases
- Thixotropic version.

Characteristic

1. Seamless, waterproof and easy to clean and maintain.
2. Unmatched design versatility.
3. Exceptional durability and abrasion resistance.
4. Lightweight
5. Very low life cycle costs compared to other floor finishes.
6. Thin set for easy jointing with adjacent floor finishes.

Surface Preparation

Please refer to our **Method Installation** details, Substrate must be sound, dry and free of all contaminants.

Concrete: Clean mechanically or acid etch, depending on conditions.
Metal: Sandblast.
Wood: Sound and clean

Technical Information

Color: As per TTMAC color plate or custom colored.
Solids content: Per volume 100%
Density: 2.15 – 2.25 kg/cm³

LaMaCo-Artificial Slab

All Grade of Artificial Slab System

Cured System Physical Properties

Properties	Test Methods	Test Require	Result
Compressive strength	ASTM C 579	5-6 mm/minute	94.7 MPa (13,732 psi)
Tensile strength	ASTM C 307	5-6 mm/minute	12.9 MPa (1,875 psi)
Flexural strength	ASTM C 580	22.8 cm (9") at 3.4 mm/minute	26.1 MPa (3,785 psi)
Modulus of elasticity in flexion	ASTM C 580	22.8 cm (9") at 3.4 mm/minute	6,652 MPa (964,540 psi)
Bond Strength	ASTM D 4541	On concrete	> 1.6 MPa (> 230 psi)
Impact resistance	ASTM D 3029	Top coat On concrete Matrix coat On concrete	5.3 J (47.3 in•lbs) 12.6 J (111.5in•lbs)
Hardness (Durometer) Shore D	ASTM S 2240		74
Indentation and Residual resistance	CSA A 126.1	After 1 minute at 23°C After 10 minutes at 23°C	0.045mm 0.050mm
Toxicity			Approved
Water vapour transmission and permeance	ASTM E 96	Water procedure B at 23°C	0.10 g/h•m2 15.4 metric perms (0.27 perm)
Freeze – thaw resistance	ASTM C 67	Section 8, 50 cycles	Passes
Indentation and Residual resistance	CSA A 126.1	After 1 minute at 23°C After 10 minutes at 23°C	0.045mm 0.050mm
Abrasion resistance	ASTM D 4060	CS-17 Wheels @1000 g/wheel – 1000 revolutions H-22 Wheels @1000 g/wheel - 1000 revolutions	109 mg loss 0.08 mm (3mils) groove 163 mg loss *
Water permeability and absorption	ASTM D 570	24 hrs immersion at 23°C 7 days immersion at 23°C 2 hrs immersion in boiling water	0.10 % 0.19 % 0.33 %

Control Joints Isolation/Expansion and Other Joints Subject to Movement

All expansion joints must be honored through the flooring system. For information pertaining to the above, consult Manufacturer’s publication, Concrete 105.

Guide of commonly used **L-types Divider Strip** for **Thin-set Artificial Slab** System

Control Joint or Expansion Joint L-types Divider Strip	Strip High	Strip Width/Thickness
Copper, Brass or Aluminium L-type Divider Strip	9mm	4mm or 6mm or 9mm
Copper, Brass or Aluminium L-type Divider Strip	11mm	4mm or 6mm or 9mm
Copper, Brass or Aluminium L-type Divider Strip	13mm	4mm or 6mm or 9mm